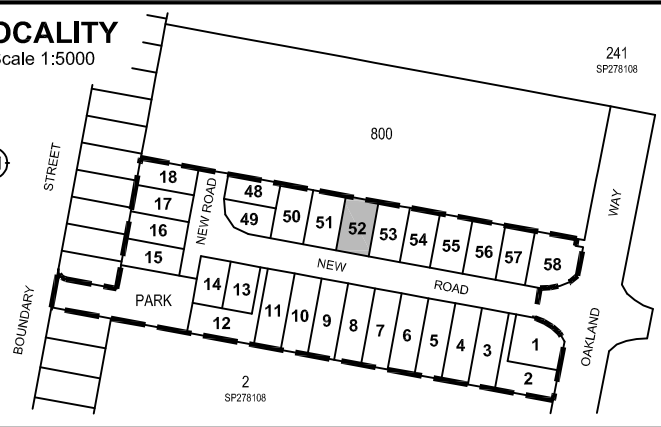


**NOTES**

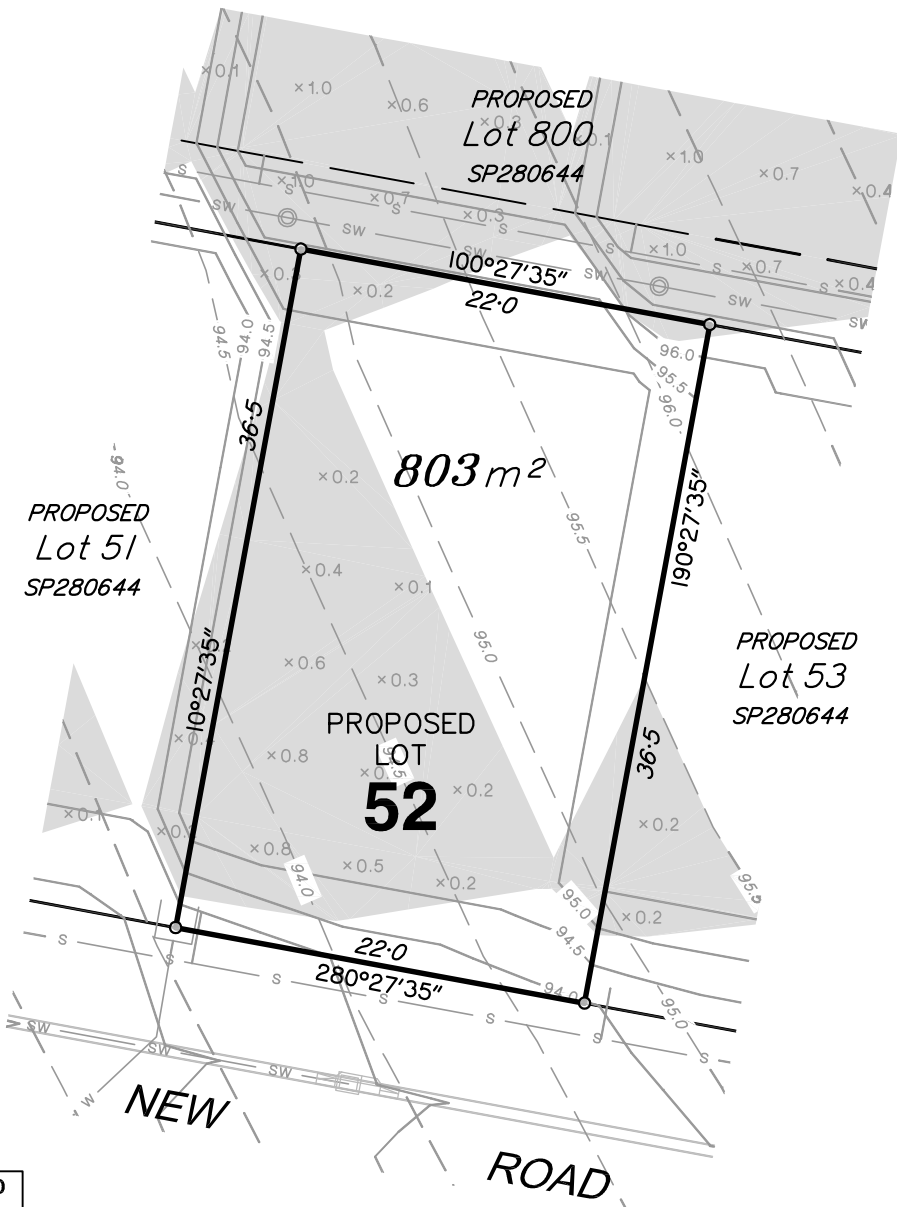
- This plan shows details of Proposed Lot 52 on Focus on Surveying Proposed Reconfiguration Plan SRD-301.06 Issue A, dated 13th April 2015, which accompanied a Subdivision Application and was approved by Scenic Rim Regional Council on the 26th May 2015 subject to conditions.
- Areas and dimensions are subject to final survey and plan registration.
- Natural surface contours have been derived from Earthwork Concept Plan Nos. 2013-02 R08 & R09 Rev D by Graham Marsh Consulting Engineers.
- Proposed Finished Surface Levels & contours have been derived from Earthwork Concept Plan Nos. 2013-02 R08 & R09 Rev D by Graham Marsh Consulting Engineers.
- Proposed Easement is for Services and Access to Services as applicable
- The compaction of the fill will be done in accordance with Australian Standard AS3798-2007. Level 1 inspection and testing will be carried out on fill over 0.5m.

**LOCALITY**

Scale 1:5000



241  
SP278108



**DESIGN SERVICES LEGEND**

- S— Sewerage Line
- Sewerage Manhole
- SW— Stormwater Line
- Stormwater Manhole
- ⌊ Stormwater Gully Pit
- ⊙ Stormwater Field Pit
- W— Water Reticulation

**LEGEND**

- 20.0--- Natural Contours
- 20.0— Design Contours
- ×0.1 Depth of Fill
- █ Extent of Fill Area
- ▬ Retaining Wall



www.focussurveying.com.au  
 info@focussurveying.com.au ph 07 3338 5095  
 Suite 6, 214 Waterworks Road, Ashgrove . QLD . 4060

**DISCLOSURE PLAN FOR PROPOSED LOT 52**

**CURRENTLY DESCRIBED AS LOT 3 ON SP278108  
 PARISH OF BEAUDESERT COUNTY OF WARD  
 17A BOUNDARY STREET, BEAUDESERT**

AMENDMENTS		SHEET 52	SHEET SIZE
A Original Issue 13/11/2015		OF	A4
B Amend eqws and add eqms 21/12/2015		SHEETS 58	
CAD FILE		LEVEL DATUM	
SRD-301_DIS1A B.DWG		AHD	
SCALE		ORIGIN	
1:400		PM13385 (RL 71,414m)	
DATE	PLAN NO.	ISSUE	
21/12/2015	SRD-301_DIS_052	B	