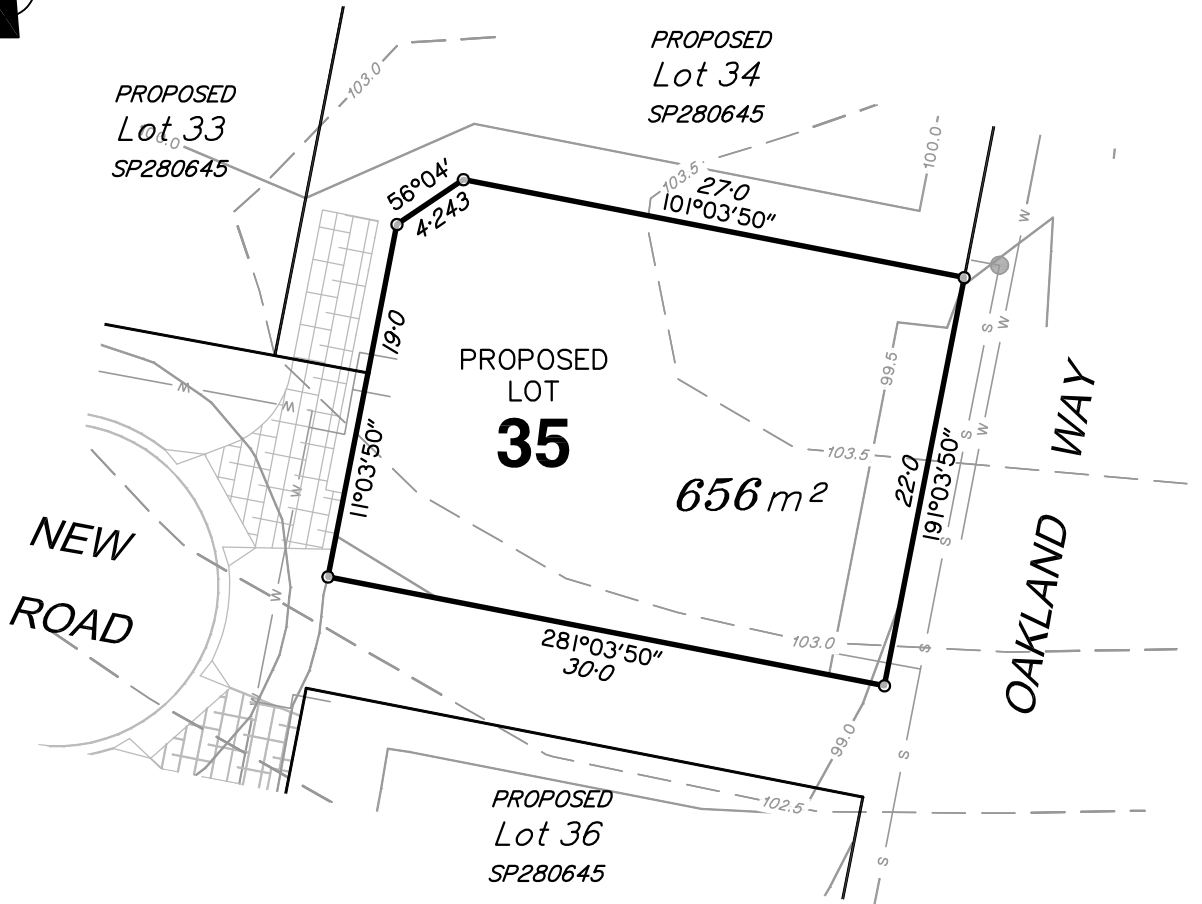
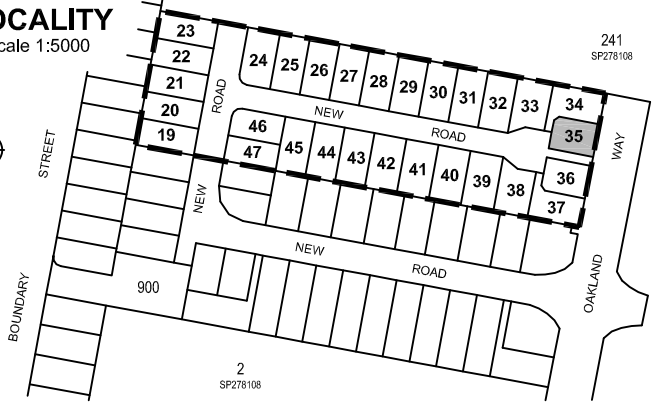


NOTES

- This plan shows details of Proposed Lot 35 on Focus on Surveying Proposed Reconfiguration Plan SRD-301.06 Issue A, dated 13th April 2015, which accompanied a Subdivision Application and was approved by Scenic Rim Regional Council on the 26th May 2015 subject to conditions.
- Areas and dimensions are subject to final survey and plan registration.
- Natural surface contours have been derived from Earthwork Concept Plan Nos. 2013-02 R08 & R09 Rev D by Graham Marsh Consulting Engineers.
- Proposed Finished Surface Levels & contours have been derived from Earthwork Concept Plan Nos. 2013-02 R08 & R09 Rev D by Graham Marsh Consulting Engineers.
- Proposed Easement is for Services and Access to Services as applicable
- The compaction of the fill will be done in accordance with Australian Standard AS3798-2007. Level 1 inspection and testing will be carried out on fill over 0.5m.

LOCALITY

Scale 1:5000



DESIGN SERVICES LEGEND

- S— Sewerage Line
- Sewerage Manhole
- SW— Stormwater Line
- Stormwater Manhole
- ⌘ Stormwater Gully Pit
- ⊙ Stormwater Field Pit
- W— Water Reticulation

LEGEND

- 20.0--- Natural Contours
- 20.0— Design Contours
- × 0.1 Depth of Fill
- ▨ Extent of Fill Area
- ▬ Retaining Wall



www.focussurveying.com.au
 e info@focussurveying.com.au ph 07 3338 5095
 a Suite 6, 214 Waterworks Road, Ashgrove . QLD . 4060

DISCLOSURE PLAN FOR PROPOSED LOT 35

**CURRENTLY DESCRIBED AS LOT 3 ON SP278108
 PARISH OF BEAUDESERT COUNTY OF WARD
 17A BOUNDARY STREET, BEAUDESERT**

AMENDMENTS

A Original Issue 13/11/2015
 B Amend ewks and add ems 04/01/2016

CAD FILE

SRD-301_DIS1B_B.DWG

SCALE

1:400

DATE

04/01/2016

PLAN NO.

SRD-301_DIS_035

SHEET

35

OF SHEETS

58

SHEET SIZE

A4

LEVEL DATUM

AHD

ORIGIN

PM13385 (RL 71.414m)

ISSUE

B