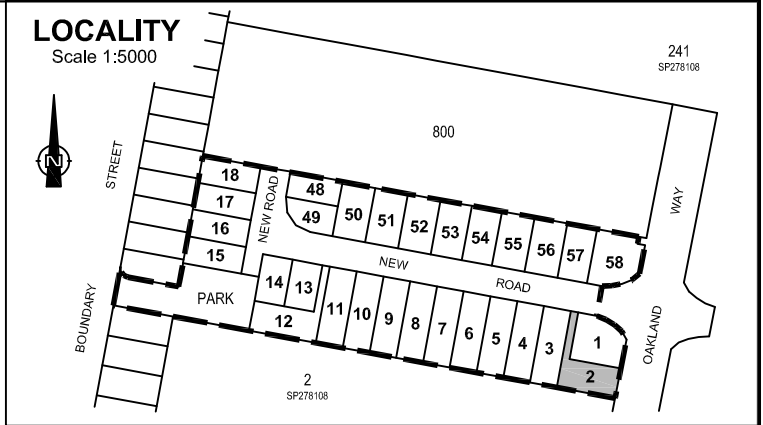


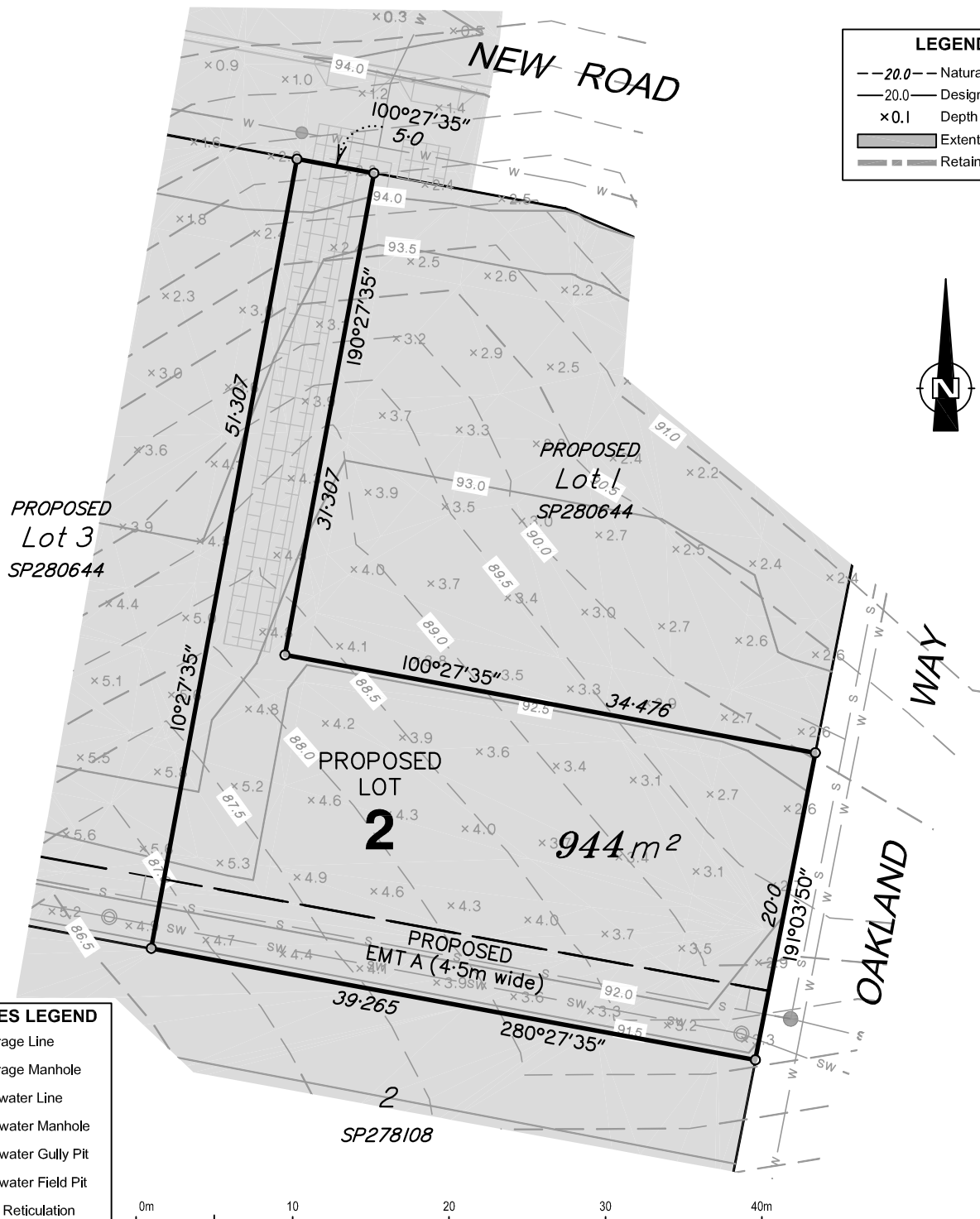
NOTES

- This plan shows details of Proposed Lot 2 on Focus on Surveying Proposed Reconfiguration Plan SRD-301.06 Issue A, dated 13th April 2015, which accompanied a Subdivision Application and was approved by Scenic Rim Regional Council on the 26th May 2015 subject to conditions.
- Areas and dimensions are subject to final survey and plan registration.
- Natural surface contours have been derived from Earthwork Concept Plan Nos. 2013-02 R08 & R09 Rev D by Graham Marsh Consulting Engineers.
- Proposed Finished Surface Levels & contours have been derived from Earthwork Concept Plan Nos. 2013-02 R08 & R09 Rev D by Graham Marsh Consulting Engineers.
- Proposed Easement is for Services and Access to Services as applicable
- The compaction of the fill will be done in accordance with Australian Standard AS3798-2007. Level 1 inspection and testing will be carried out on fill over 0.5m.



LEGEND

- 20.0 --- Natural Contours
- 20.0 — Design Contours
- x 0.1 Depth of Fill
- █ Extent of Fill Area
- ▬ Retaining Wall



DESIGN SERVICES LEGEND

- S Sewerage Line
- Sewerage Manhole
- SW Stormwater Line
- Stormwater Manhole
- ☐ Stormwater Gully Pit
- ⊙ Stormwater Field Pit
- W Water Reticulation



www.focussurvey.com.au
 e info@focussurvey.com.au ph 07 3338 5095
 a Suite 6, 214 Waterworks Road, Ashgrove . QLD . 4060

DISCLOSURE PLAN FOR PROPOSED LOT 2

CURRENTLY DESCRIBED AS LOT 3 ON SP278108
PARISH OF BEAUDESERT COUNTY OF WARD
17A BOUNDARY STREET, BEAUDESERT

AMENDMENTS		SHEET 2	SHEET SIZE
A Original Issue 13/11/2015		OF	A4
B Amend dims and add emts 21/12/2015		SHEETS 58	
CAD FILE		LEVEL DATUM	
SRD-301_DIS1A B.DWG		AHD	
SCALE		ORIGIN	
1:400		PM13385 (RL 71,414m)	
DATE	PLAN NO.	ISSUE	
21/12/2015	SRD-301_DIS_002	B	