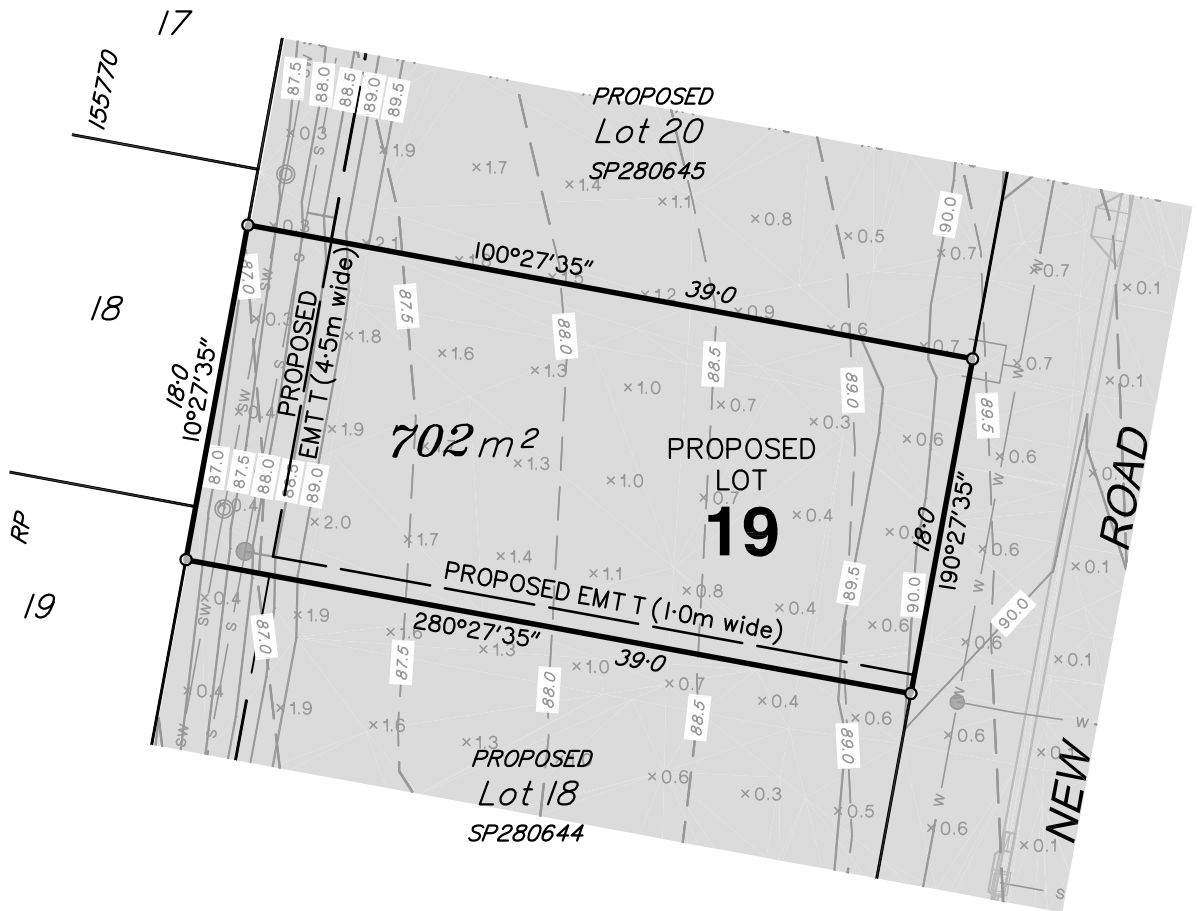
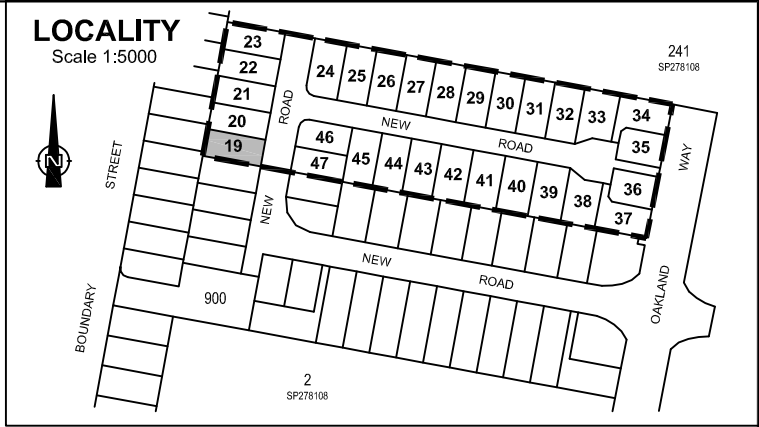


NOTES

- This plan shows details of Proposed Lot 19 on Focus on Surveying Proposed Reconfiguration Plan SRD-301.06 Issue A, dated 13th April 2015, which accompanied a Subdivision Application and was approved by Scenic Rim Regional Council on the 26th May 2015 subject to conditions.
- Areas and dimensions are subject to final survey and plan registration.
- Natural surface contours have been derived from Earthwork Concept Plan Nos. 2013-02 R08 & R09 Rev D by Graham Marsh Consulting Engineers.
- Proposed Finished Surface Levels & contours have been derived from Earthwork Concept Plan Nos. 2013-02 R08 & R09 Rev D by Graham Marsh Consulting Engineers.
- Proposed Easement is for Services and Access to Services as applicable
- The compaction of the fill will be done in accordance with Australian Standard AS3798-2007. Level 1 inspection and testing will be carried out on fill over 0.5m.



DESIGN SERVICES LEGEND

- S— Sewerage Line
- Sewerage Manhole
- SW— Stormwater Line
- Stormwater Manhole
- ⌒ Stormwater Gully Pit
- ⊙ Stormwater Field Pit
- W— Water Reticulation

LEGEND

- 20.0--- Natural Contours
- 20.0— Design Contours
- x 0.1 Depth of Fill
- █ Extent of Fill Area
- Retaining Wall



www.focussurvey.com.au
 info@focussurvey.com.au ph 07 3338 5095
 a Suite 6, 214 Waterworks Road, Ashgrove . QLD . 4060

DISCLOSURE PLAN FOR PROPOSED LOT 19

**CURRENTLY DESCRIBED AS LOT 3 ON SP278108
 PARISH OF BEAUDESERT COUNTY OF WARD
 17A BOUNDARY STREET, BEAUDESERT**

AMENDMENTS A Original Issue 13/11/2015 B Amend ems and add ems 04/01/2016		SHEET 19 OF SHEETS 58	SHEET SIZE A4
CAD FILE SRD-301_DIS1B_B.DWG		LEVEL DATUM AHD	
SCALE 1:400		ORIGIN PM13385 (RL 71.414m)	
DATE 04/01/2016	PLAN NO. SRD-301_DIS_019	ISSUE B	