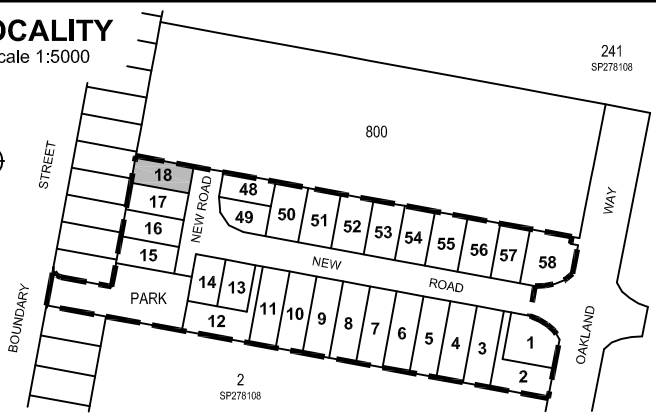


NOTES

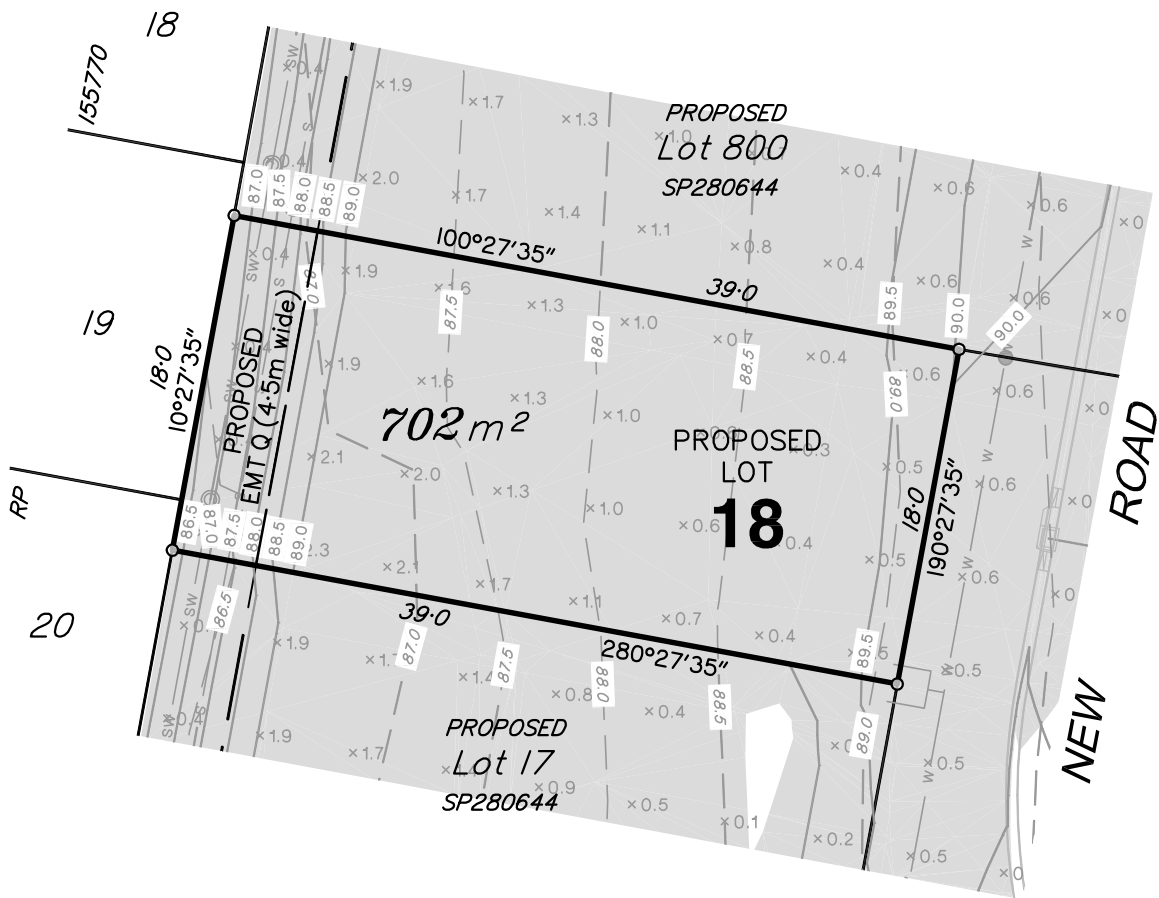
- This plan shows details of Proposed Lot 18 on Focus on Surveying Proposed Reconfiguration Plan SRD-301.06 Issue A, dated 13th April 2015, which accompanied a Subdivision Application and was approved by Scenic Rim Regional Council on the 26th May 2015 subject to conditions.
- Areas and dimensions are subject to final survey and plan registration.
- Natural surface contours have been derived from Earthwork Concept Plan Nos. 2013-02 R08 & R09 Rev D by Graham Marsh Consulting Engineers.
- Proposed Finished Surface Levels & contours have been derived from Earthwork Concept Plan Nos. 2013-02 R08 & R09 Rev D by Graham Marsh Consulting Engineers.
- Proposed Easement is for Services and Access to Services as applicable
- The compaction of the fill will be done in accordance with Australian Standard AS3798-2007. Level 1 inspection and testing will be carried out on fill over 0.5m.

LOCALITY

Scale 1:5000



241
SP278108



DESIGN SERVICES LEGEND

- S — Sewerage Line
- Sewerage Manhole
- SW — Stormwater Line
- Stormwater Manhole
- ⌘ Stormwater Gully Pit
- ⊙ Stormwater Field Pit
- W — Water Reticulation

LEGEND

- 20.0 --- Natural Contours
- 20.0 — Design Contours
- × 0.1 Depth of Fill
- ▒ Extent of Fill Area
- Retaining Wall



FOCUS
ON SURVEYING

www.focusurvey.com.au
e info@focusurvey.com.au ph 07 3338 5095
a Suite 6, 214 Waterworks Road, Ashgrove . QLD . 4060

DISCLOSURE PLAN FOR PROPOSED LOT 18

**CURRENTLY DESCRIBED AS LOT 3 ON SP278108
PARISH OF BEAUDESERT COUNTY OF WARD
17A BOUNDARY STREET, BEAUDESERT**

AMENDMENTS

A Original Issue 13/11/2015
B Amend dwgs and add emts 21/12/2015

SHEET 18 OF SHEETS 58 SHEET SIZE A4

CAD FILE SRD-301_DIS1A B.DWG

LEVEL DATUM AHD
ORIGIN PM13385 (RL 71,414m)

SCALE 1:400

DATE 21/12/2015

PLAN NO. SRD-301_DIS_018 ISSUE B